

Who can be a leader in Cru? **Cru.**

You can. In fact, leading will be a critical factor in your own development as a disciple of Christ. The movement needs leaders of course, but the primary reason we are student-led is to help you grow.

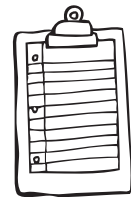
We have four distinct lanes of leadership in Cru, all with the same purpose, but each with a different focus. All lanes play a role in building a community where the gospel captures hearts, transforms lives, and launches men and women into a life-long adventure with Christ. The unique focus of each is described below.

Leadership terms last one year and each lane has its own application process. At the end of the year you can apply to re-up within your lane, or opt to try something different.

Manager

Managers run the infrastructure of Cru. If you like to set direction, strategize, plan, and execute those plans, this lane is for you. Various Managers lead our weekly meeting, worship, conferences, community events, communications, service opportunities, prayer, men's and women's times, and world vision.

Our goal is to provide the critical infrastructure that will give students at Penn State a richer, deeper, and fuller understanding of the gospel.



ed.hanna@uscsm.org (610) 217-0527

Missionary

Our goal is to bring about the day that every student at Penn State hears the gospel from someone they trust. The Missionaries are the leading edge of this endeavor.

They are individuals who identify a particular group of students (sorority, fraternity, dorm floor, major, club, ethnic group, etc.) among whom they will live and love, and in natural and appropriate ways, talk about Jesus.

Join us and develop life-long skills to love people well.



tim.henderson@uscsm.org (814) 280-3771

Penn State Cru is directed by Tim Henderson (814) 280-3771 and Jen Durlin (717) 599-6876.
We'd love to hear from you if we can help you in any way.

Multiplier

Multipliers are the teachers of Cru. They lead our dozens of small group Bible studies across campus, and meet weekly with students one-on-one to help them walk, communicate, and multiply their faith.

If you would like to directly develop students by helping them understand and apply the gospel, or if you want to hone your own skills as a teacher and community builder, you'll love being a Multiplier.



tom.sperlich@uscsm.org (814) 441-2986

Freshman

The Freshman team exists to reach every freshman here. Think of the impact if we grabbed a massive freshman class year after year. Bible studies would grow, community would be rich, and leadership teams would thrive.

Imagine East Halls saturated with the gospel. Can you picture it? Every dorm, club, and study group permeated with hundreds of men and women transformed by Christ.

That's what we're all about. Trusting Jesus to turn that vision into reality. And to do it, we need your help.



mark.hough@uscsm.org (814) 933-7407
kim.hough@uscsm.org (814) 933-7493

What is Cru?

Cru is a

Community where the

Gospel

Captures hearts
Transforms lives
and

Launches men and women into a life-long adventure with Christ.

Let's unpack that.

Cru is a Community. Life is all about relationships. That's because the world was created by someone who is a relationship. God is a community of persons— Father, Son, and Holy Spirit— who from all eternity have known and loved each other. And you were made in his image, albeit in a simpler way. Since you aren't a community of persons in yourself you need a community to surround you. You are like a square that was made for cubeness— you need other squares. In light of that deep theological truth everything in Cru is built to help you experience community.

The Gospel. Cru isn't just a community who is into itself. Cru is a community that draws its purpose from the life-altering, humility-producing, joy-increasing story of the God who would rather die than live without us.

Captures hearts. Of course our hearts are already captivated, but often by unworthy things. As C.S. Lewis said, "We are half-hearted creatures, fooling about with drink and sex and ambition when infinite joy is offered to us, like an ignorant child who wants to go on making mud pies in a slum because he cannot imagine what is meant by the offer of a holiday at the sea. We are far too easily pleased." Cru aims to be a community that helps every student at Penn State come to see that Jesus is better than all competing things that tempt and tease.

Transforms lives. The gospel teaches us that we are worse off than we would ever care to admit, and more loved than we could ever dare to hope. When we accept these truths deep into our lives they change us. On the one hand they erase all basis for arrogance, leaving us humble. On the other, they erase all reason for despair, giving us great hope. Jesus changes our lives and enables us to obey him out of love rather than fear, and frees us to love others without seeking anything in return.

Launches men and women on a lifelong adventure with Christ. Cru isn't just a club here to entertain you for four years. Our hope is that your involvement in a gospel-soaked community will prepare you for a life of radical love, sacrificial service, cheerful suffering, and deep joy. We hope that as a result of your time learning, leading, and serving in Cru, you will be a better husband and dad, wife and mom. A better worker in whatever field you go into. And above all, an ambassador for Christ to a world that desperately needs to know him.



Cru.

Penn State Cru is the local chapter of
Campus Crusade for Christ
pennstatecru.org

Cru.

How will Cru help me grow?

Cru will help you grow by offering a rich and varied **discipleship** experience now, and by preparing you to be a **disciple of Christ for the rest of your life**. A disciple is a follower, an adherent, a student. We want to help you learn from, adhere to, and follow Christ. At different stages in your college career discipleship will look different based on your age, needs, and role within Cru. When you graduate we hope the variety and depth of your discipleship experience will help give you a smooth transition to being a life-long, adult disciple.



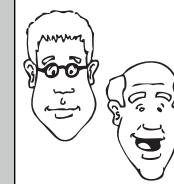
Leadership Group

In Cru you can lead in the Manager, Multiplier, Missionary, or Freshman lanes (see back page for details). When you're ready to lead, you'll join a Leadership Group for your development as a leader. These meet Monday nights from 6:30-8:00. With the other leaders in your lane you'll share your experiences and study the Scriptures, as well as work on skills and strategy. You'll also get periodic one-on-one time with the staff coach who is overseeing this stage of your discipleship. While this is a highly developmental time, we suggest younger leaders supplement this experience by remaining in their **small groups**, and that seniors supplement it by joining a **peer group**.



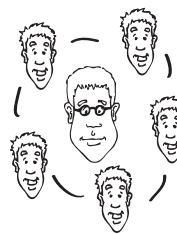
D-Time

Everything on this page is about helping you be a disciple of Christ including D-Time which is short for "Discipleship Time." Here you meet one-on-one weekly with an older student who will personally help you walk, communicate, and multiply your faith.



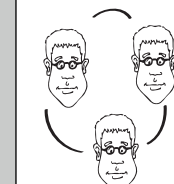
Mentorship

In your final year we'll connect you with adults from local churches who will help you thrive after college. Through monthly family discussions, and several one-on-one connections each semester you'll get practical help in living for Christ as an adult.



Small Group Bible Study

This will be one of the most formative experiences of your time at Penn State. You and half a dozen other students, led by an older student, will meet weekly to study a particular book or topic in the Bible and build relationships with each other.



Peer Group Bible Study

As a senior we'll help you learn the life-long skill of developing yourself and each other as peers. In a leaderless study, you and two or three other friends will use a flexible Bible discussion method known as SORT.



Cru Core Values

When you first come to Cru, regardless of your year or age we will invite you to go through a five week, one-on-one study of the basics of following Christ. These lessons have proven incredibly helpful for hundreds of students before you. If you're new, or if you missed them when you were new, and we hope you'll take us up on the offer.



Cru on Thursday nights

Connecting with staff

Conferences (Fall Retreat, RADIATE, Big Break)

Summer Project

These things are available to everyone in Cru as long as you are here. Make the most of every opportunity!



Personal Bible reading

Attending church

Interacting with believing friends

Dialoging with unbelievers

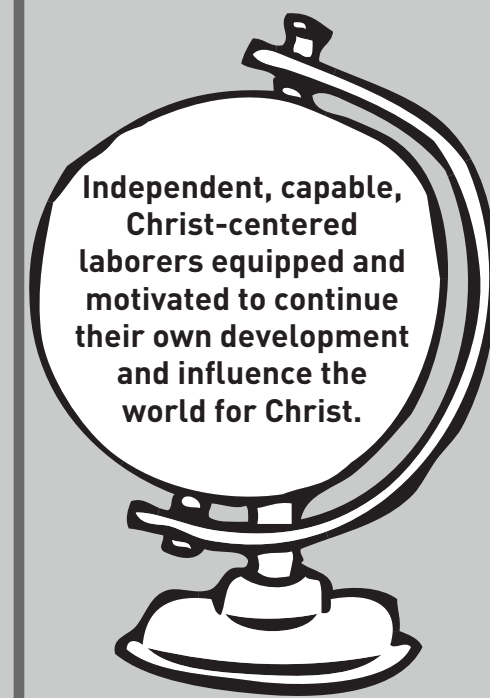
Giving

Praying

Reading great books

Leading others

These things will be foundational to your growth for your entire life. Develop good habits now!



Independent, capable, Christ-centered laborers equipped and motivated to continue their own development and influence the world for Christ.

Everything we do is designed to move you toward this!

Freshmen

Sophomores

Juniors

Seniors

Graduates